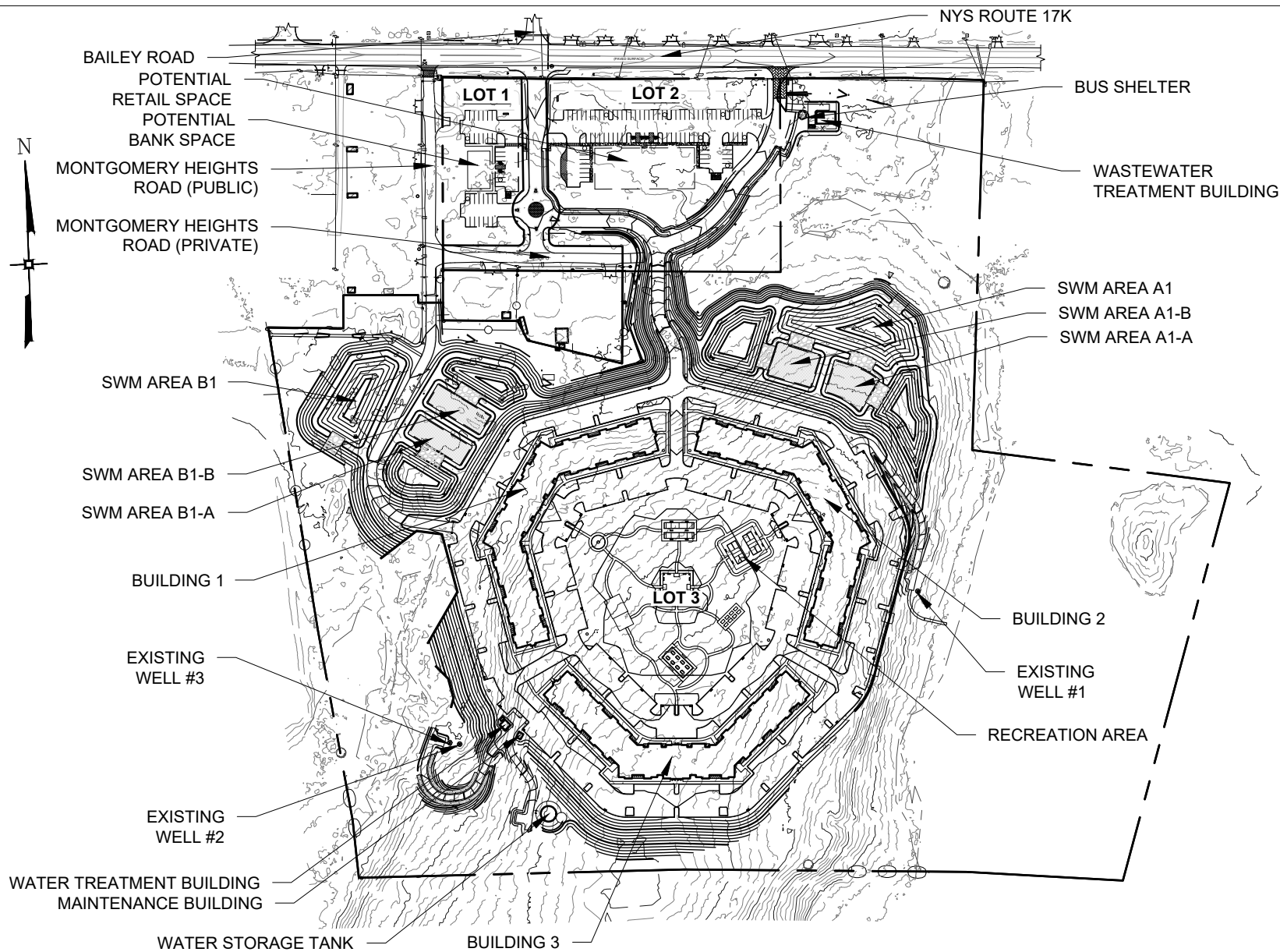


Drawing Name: Z:\103.0301 - Sheffield Apartments\EAF & EIS Figures\103.0301 - EIS Figures.dwg Date Printed: Dec 17, 2025, 10:46am



SOURCE: MAP BY ENGINEERING AND SURVEYING PROPERTIES, PC  
DATED 12/19/2025

PROPOSED SITE LAYOUT	SHEFFIELD APARTMENTS ROUTE 17K TOWN OF MONTGOMERY ORANGE COUNTY, NEW YORK	DATE: 12/15/2023 REV 12/19/2025	JOB # 103.0301	<b>ENGINEERING &amp; SURVEYING PROPERTIES</b> Achieving Successful Results with Innovative Designs	MONTGOMERY OFFICE 71 CLINTON STREET MONTGOMERY, NY 12549 Ph: (845) 457-7727 WWW.EP-PC.COM
		SCALE: 1"=300'	SHEET # 2.3A		